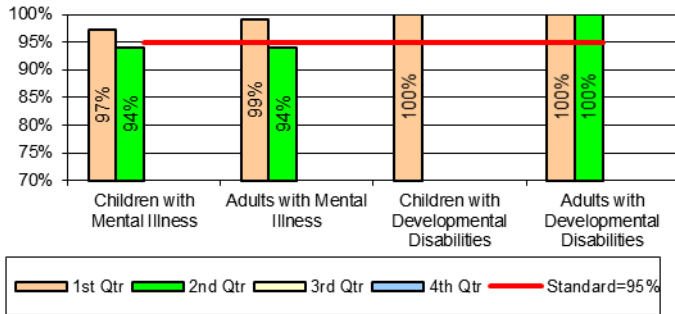


MMBPIS Report to WCMCMH Board
2nd Quarter 2017 (January – March 2017)
June 6, 2017

On a quarterly basis, all Community Mental Health Service Providers (CMHSPs) compile data and report to Michigan Department of Community Health (DCH) on a number of performance indicators, compliance indicators, and monitoring measures. Below is a summary of WCMCMH performance on 6 of these indicators.

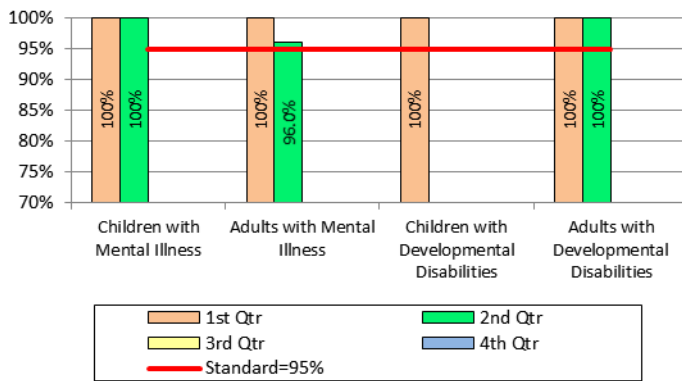
Percentage of Consumers Receiving an Initial Assessment within 14 Days of 1st Request



This graph shows the percentage of assessments (first appointments) which occurred within 14 days of the person's first request for services.

For the 2nd Quarter, WCMCMH was below the State standard for children and adults with mental illness. Outliers have been examined to determine areas for improvement, and plans of correction will be implemented.

Timeliness from Assessment to Start of Care



This graph shows the percentage of consumers seen for the start of ongoing care within 14 days of initial assessment.

For the 2nd Quarter, WCMCMH met the State standard for all populations served.

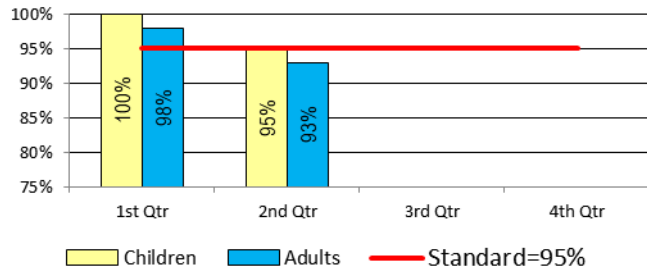
Service Entry Assessments – Second Opinions – 2nd Quarter FY 2017:

Total Number of Service Entry Assessments:	Number of Service Entry Assessments resulting in no further care at WCMCHS:	Number of Service Entry Assessments where Second Opinion was requested:
109	35	0

This table shows how the State measures ease for consumers to get needed services. There were no second opinions requested during 2nd Quarter.

Note: MDHHS has determined that Autism Benefit Services should be excluded from the MMBPIS dataset. Therefore, children assessed and brought into care under the Autism Benefit are not included in this report.

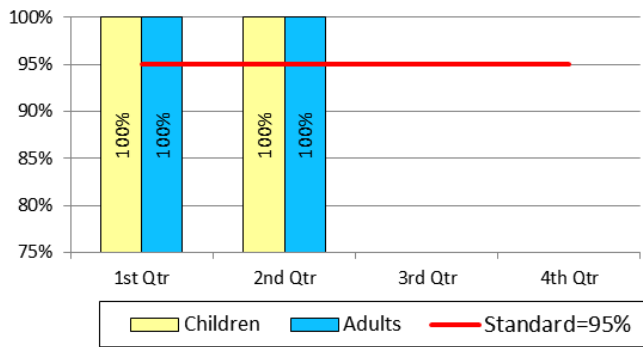
Percentage of Inpatient Screenings Completed within 3 Hours or Less



This graph shows the percentage of times WCMCMH clinicians came to a decision regarding hospitalization within 3 hours of request. For consumers requesting emergency hospitalization, the State mandates that 95% of these decisions must be made within 3 hours of the request for hospitalization.

For the 2nd Quarter, WCMCMH was below the State standard for adults. Outliers have been examined to determine areas for improvement, and plans of correction will be implemented.

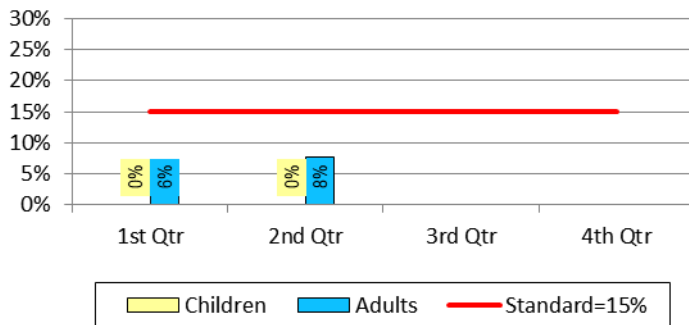
Percentage of Persons Discharged from Inpatient seen within 7 Days



This graph shows the percentage of WCMCMH consumers who were discharged from an inpatient facility and were seen by WCMCMH staff within 7 days of discharge.

For the 2nd Quarter, WCMCMH met the State standard for all populations served.

Percentage of Discharges Readmitted to Inpatient within 30 Days



This graph shows the percentage of consumers who leave an inpatient facility and are then readmitted for inpatient services within 30 days. The State standard is less than 15%.

For the 2nd Quarter, WCMCMH met the State standard for all populations served.

SUMMARY/CONCLUSION:

Outstanding Performance:

- Percentage of persons discharged from inpatient seen within 7 days

Acceptable Performance:

- Timeliness from assessment to start of care
- Service Entry Assessments – 2nd Opinions
- Percentage of discharges readmitted to inpatient within 30 days

Below Acceptable Performance:

- Percentage of inpatient screenings done within 3 hours or less
- Percentage of consumers receiving an initial assessment within 14 days of 1st request

If you have any questions, please call Michele Condit at 231-843-5464.